

A New Generation of SunRise 3-in-1 Microfilm Scanners

In keeping with its tradition since 1991, SunRise Imaging continues to lead the microfilm scanner industry by incorporating the latest in technology in its new family of products. The SunRise 3-in-1 signature scanners: RapidScan and the SpeedScan offer powerful new ScanFlo application that takes advantage of the latest in hardware and operating system platforms.

- **3 in 1 Modular Design**
- **Outstanding Quality**
- **Dual Stream Output**
- **12-bit Grayscale**
- **Scalable Solutions**
- **Fastest ROI**
- **True DPI**

SunRise Imaging, Inc.

1813 East Dyer Road, Suite 412
Santa Ana, CA 92705, USA
Tel: 949.252.3003
sales@sunriseimaging.com

SunRise Imaging (EMEA) Ltd.

SBC House, Restmor Way
Wallington, Surrey, UK SM6 7AH
Tel: +44.208.255.2011
sales@sunriseimaging.co.uk

SunRise Imaging (India) Pvt. Ltd.

33 Racecourse Road
Bangalore - 560001, India
Tel +91. 80. 2235. 6191
sales@sunriseimaging.co.in

Hardware Specifications

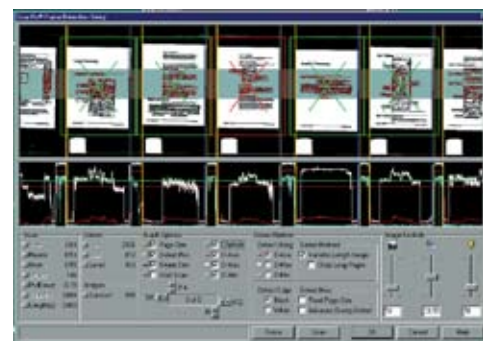
The new generation of SunRise microfilm scanners incorporate the latest in computing hardware. All models come with an integrated computer, running Microsoft XP operating system. The graphic display interface in the SunRise scanners allow the use of standard analog or digital displays. A 17", or larger, with a minimum 1280 x 1024 resolution is recommended.

The SunRise 3-in-1 scanning system consists of a Base Unit which includes, computer, software, scanner controls, camera & light source. A Rollfilm, fiche, or an aperture card module completes the system for any type of microfilm to be scanned.

3-in-1	Yes	Yes
Dual stream	Yes	Yes
True output resolution	Yes	Yes
Selectable camera resolution	Yes	Yes
Upgradeable	Yes	Yes
Module interchangeability	Yes	Yes

Software:

Operating System: Windows XP Pro Applications	Yes	Yes
ScanFlo 3000	Yes	Yes
RowScan option	Option	included
Remote access diagnostics	Yes	Yes



ScanFlo applications makes it easy and fast for you to setup and operate your 3 in 1 scanner

Computing System

Processor	Intel P4 3.0 GHz	Intel P4 3.6 GHz
DRAM	1 Gbyte	2 Gbyte
Hard drive	SATA 160 GByte	SATA 300 GByte
Optical drive: Dual layer DVD writer	Yes	Yes
Flash drive	Yes	Yes

I/O

USB 2.0: Front panel -2, Rear panel -4	Yes	Yes
Display: Analog & DVI	Yes	Yes
Mouse & Keyboard	Yes	Yes
LAN: Gigabit Ethernet	Yes	Yes

Imaging

Linear CCD 8160 pixel array	Yes	Yes
Camera	SRI-SpeedScan	SRI-RapidScan
Lens: Nikon 60mm f/2.8	Yes	Yes

Input power:

110/220 VAC, 47-63 Hz, 5.0 Amp (surge protection recommended)

Environment: Temp:

Operating 10-24oC (50-75oF), **Non-operating** 0-70oC (0-158oF), **Variation** 4oC (40oF)/hour
Humidity: 1.05-1.4 CMM (37-50CFM)
Altitude: 0-3048 meters (0-10,000 feet)

Safety:

FCC Class A, CE ITE Class I

Mechanical - Base Unit:

Weight 43.5 kg (96 lb); Dim H 68.8 cm (27") x D 67.3 cm (26.5") x W 36.8 cm (14.5")

Shipping Weight:

68.5 kg (151 lb); Dim H 81.3 cm (32") x D 81.3 cm (32") x W 43.2 cm (17")

(Note: Width of the Base Unit is without the Modules, which are shipped in a separate container)

Software Specifications

The new family of SunRise 3-in-1 microfilm scanners now include many of the capabilities that were available options (such as Image Density Compensation, Gamma Correction, Grayscale), as standards. In addition, many new ones have been developed to provide higher level of functionality. Example of this is the ability to capture the images in dual stream mode – bi-tonal and 8-bit grayscale – at the same time, thereby eliminating the need rescan.

Grayscale scanning	Up to 12 bit
Image processing	Bi-tonal & 4, 8, 12 -bit grayscale. Grayscale edge detection, Crop & deskew, Rotation, Segmentation, Blip detection
Post processing	View saved images, flip, rotate, invert and save
Special features	Rollfilm – option to skip blank pages Fiche – apply four different image processing options on same fiche
Display	Selectable between bi-tonal & grayscale display based on the type of scan
Digitized data stream	Simultaneously bi-tonal and 8 bit grayscale with different naming options
TIFF files	Compressed multi page tiff for bi-tonal
File formats	Separate options for bi-tonal & grayscale and bi-tonal in file preferences
Crop & deskew	Crop & save with or without deskewing
Scan settings	Parameter changes are remembered & shown across all windows
User interface	Improved UI by logically grouping all the fields
Error reporting	Enhanced error logging & reporting
Rescan	Real time image processing eliminates the need rescan to see the changes
Ease of use	Switch to a specified sub-window in processor window, by specifying the name, or selecting the part of the image in the original sub-window
Utility	Focus utility to help users choose head height and focus
Help	Extensive dialog specific help displayed without search

Microfilm support

Film polarities	Negative/Positive
Reduction	7x – 72x
Document size	A0 – A4 (A – E)
Film formats	Standard & most non-standard
Compression types	Bi-tonal: TIFF uncompressed, TIFF CCITT G4, Multi page TIFF I & II Grayscale: TIFF uncompressed, TIFF LZW, JPEG (8-bit), GIF (8-Bit)

Modules

Rollfilm



Film types:

16mm, 35mm (edge to edge)
Cine/comic (portrait/landscape),
Simples/Duplex/Multiplex, COM
Roll, Oil Well Logs

Options: 1000 ft reel attachment;
16mm 3M cartridge adapter

Fiche



Film types:

Standard and jumbo fiche, Jacketed,
Cine/comic (portrait/landscape),
Simples/Duplex/Multiplex, COM,
Oil Well Logs, AB Dick, Microx,
Step & repeat fiche

Options: Reflective title bar; AB
Dick locator pins and filter

Aperture Card



Options:

Hollerith code reader



SunRise Imaging - A global company, with global customers, sales, support & service

