



SCANNERS
PRINTERS
SOFTWARE
SERVICES

IDEAL.com

Large Format Imaging Solutions

IDEAL ArchiveCenter for Enterprise

Built on proven IntraNETIX technology

A Web-based Document Storage, Retrieval and Distribution Solution for All Kinds of Large Format Documents



Start Page	File	Docs	User Set	View		
Add to User Set Select All Reset						
New Search	Project	Type	Drawing Number	Version	Sheet Number	Title
	AERIAL	GIS	001-INSERT	1	1	DOWNTOWN
	COLLEGE CAMPUS	AEC	A0-1	1	1	GENERAL
	COLLEGE CAMPUS	AEC	80122	1	4	ROOF PLAN
	COLLEGE CAMPUS	AEC	6981	1	1	WIRING DIAGRAM SCHEDULE
	COLLEGE CAMPUS	AEC	6321	1	24	CHAPEL DESIGN
	COLLEGE CAMPUS	AEC	001-INSERT	A	1	PROFESSIONAL BUILDING
	COLLEGE CAMPUS	AEC	80122	1	1	COLUMN SCHEDULE
	COLLEGE CAMPUS	AEC	6901	2	2	PROFILES

SEARCH, VIEW AND PRINT TOOL FOR THE ENTIRE ENTERPRISE

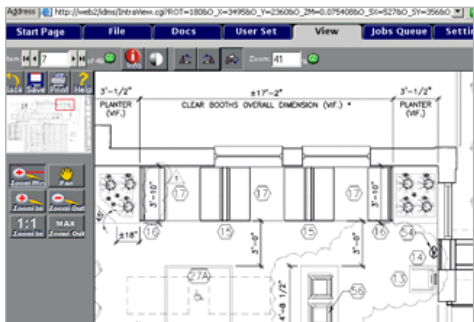
Imagine empowering every person in your company or organization with the ability to find, view, and print any document they need at any time and at any place. ArchiveCenter for Enterprise unleashes the power of the internet with database connectivity, and document rendering at an affordable price.

DOCUMENT CONTROLLER FOR GRAPHICS AND ENGINEERING

We built the system around the need to store, retrieve, view and print vast numbers of large complex designs and gigabyte size images, as well as letter size office and legal documents. As a market leader of engineering scanner hardware systems, IDEAL.com has been delivering digital wide-format document imaging solutions since 1987.

BROWSER BASED, NO CLIENT SOFTWARE OR PLUG-INS TO INSTALL

One of the biggest advantages of a pure dynamic HTML web based system is that the client software is already installed. Not having to schedule IT to install software at every workstation greatly reduces implementation time and cost. IntraNETIX works with all mainstream Mozilla based web browsers, from Internet Explorer 3 and Netscape 4 to today's latest versions.



NOT AFFECTED BY POP-UP BLOCKERS

ArchiveCenter for Enterprise runs in a single browser window so that users stay focused and don't become confused.

USE ON ANY PLATFORM

Your investment is further protected from the barriers of a mixed computer environment because it can be used on most any type of computer, PC, Mac, Linux, or Unix. Because it's browser based, ArchiveCenter for Enterprise lets you leverage the full power of wireless, Tablet PC, and handheld PDA technologies.

BUILT-IN VIEWER WITH WINDOW ZOOMING AND PANNING

ArchiveCenter for Enterprise includes a lightning fast, feature rich document viewer that runs on the host. The user interface is intuitive and the image area self-adjusts to display resolutions from 640 x 480 to 1600 x 1200 and beyond. ArchiveCenter for Enterprise supports large images and documents, in color or black and white.

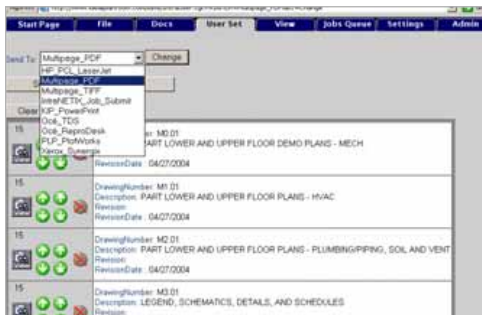


CENTRALIZED AND REMOTE PRINTING

ArchiveCenter for Enterprise Print jobs are processed and sent directly from the host computer, reducing network traffic and eliminating the need to install and verify printer drivers on every client desktop.

SHARE COSTLY WIDE FORMAT NETWORK PRINTERS AND PLOTTERS

Anyone in your company will be able to quickly assemble a document set and submit to a network printer or plotter. ArchiveCenter for Enterprise even collates the job with the first page on top and the last page on the bottom of the stack eliminating costly sorting time at the document output tray of the printer.



"SHOPPING CART" FOR BATCH PRINTING AND PRINT ROOM SUBMIT

Users can easily assemble their own print sets with a "shopping cart" mechanism. They select the files they want to print and add them to a list which they can re-arrange and apply settings such as sheet size and number of copies. Then they can output collated print sets directly to a printer or to a held queue awaiting further review and submission by a print room or reprographics production operator.

DELIVER DOCUMENT SETS IN PDF, DWF, CGM OR TIFF

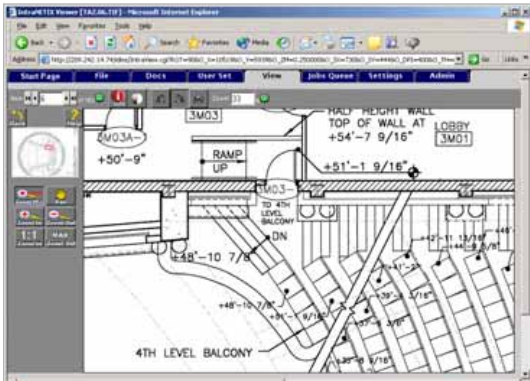
The same "shopping cart" mechanism used for Batch Printing can be used to convert entire document sets to PDF, DWF, CGM, TIFF and many more file formats for distribution via email, saving both time and money as shipping costs decrease and production delays are minimized.

OPEN DATABASE, SQL, ORACLE, ACCESS, OR ODBC

ArchiveCenter for Enterprise can run on a database that is familiar to, or already in place at your organization, making it even easier to implement and achieve maximum efficiency. ArchiveCenter for Enterprise can even be configured to connect to Unix servers running Oracle.

UNLIMITED NUMBER OF DATABASES RESIDING LOCALLY OR ON NETWORK SERVERS

ArchiveCenter for Enterprise does not restrict your application to one single vault or repository. You can set up any number of document database archives of any variety with no imposed limit on number of records or number of fields. When designing the creation of your archive database, you can determine what field attribute information is captured, or use a standard template for your type of industry. Archive databases can reside on the ArchiveCenter for Enterprise server or on any other network server.



WYSIWYP PLOT STYLES, SCREENING, AND LINE WEIGHTS

Anyone who's ever seen a CAD file displayed on a computer can recollect a rendering of bright colored geometric figures on top of a dark background. The fact is that most users of a CAD document have no idea what the colors mean. ArchiveCenter for Enterprise can display CAD files and all other types of documents exactly as they appear when printed out on paper, with the correct line thicknesses, font styles, shading, etc. In other words, "What You See Is What You Print".

EMBEDDED RIP RENDERING ENGINE

The ArchiveCenter for Enterprise document controller processes native files, file formats for sharing, as well as print and plot file formats. This flexibility allows documents to be captured, utilized, and archived at any phase within their lifecycle, from scan file indexing and conversion to the printing of construction, production, and as-built drawing sets and specifications. ArchiveCenter for Enterprise has the option for direct support of files from high end CAD systems like Pro/E, Unigraphics, CATIA, and Solid Works, as well as image compression technologies such as Mr. SID and JPEG 2000 formats used for maps and remote sensing data.

EASY SETUP AND IMPLEMENTATION MEANS QUICK ROI

ArchiveCenter for Enterprise can be installed, functional, connected to your data and your key people can be trained in less than a day. Our training programs allow you to select the appropriate method and amount of time that fit your budget and schedule, whether on-site or on-line.

LOW COST OF OWNERSHIP

Our flexible licensing models, subscription options, and financing programs make ArchiveCenter for Enterprise the easy choice to document-enable a department or your entire organization.

WINDOWS, LINUX, OR UNIX BASED CONTROLLERS

ArchiveCenter for Enterprise host controller software is available on alternative platforms, for homeland security and other special applications. ArchiveCenter for Enterprise can help eliminate the risk of having too much of your business dependent on one operating system platform.

CUSTOMIZABLE OPEN ARCHITECTURE

Open API and availability to connect directly with developer support makes ArchiveCenter for Enterprise the choice for your application. ArchiveCenter for Enterprise technology powers some of the most robust and leading edge web applications, like the U.S. FEMA Flood Map Store which serves out the nations flood maps to consumers and insurance professionals. ArchiveCenter for Enterprise is extendible to commercial content-for-sale and print-for-pay solutions with the IX PlanRoom module.

SUPPORTS CLUSTERING

ArchiveCenter for Enterprise can run on a network "farm" consisting of any number of host computers at an affordable price.

SCALABLE TO PROJECT MANAGEMENT AND E-COMMERCE PLAN ROOM APPLICATIONS

Extend your document management application to your partners or your business community by upgrading when the time is right. ArchiveCenter for Enterprise upgrade modules are available that add notification, communication, and even credit card transaction processing capabilities to your ArchiveCenter for Enterprise solution.

AUDIT TRAIL, LOGGING AND REPORTING

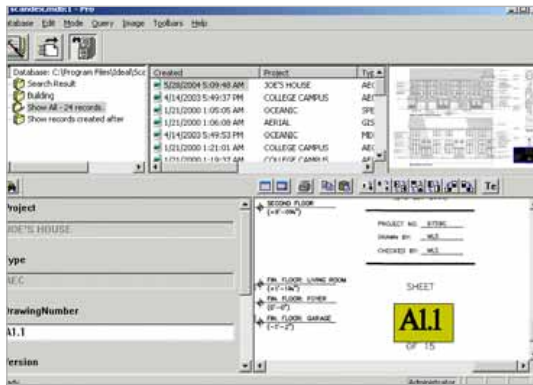
In today's world it's often necessary to track every detail in case of emergency or legal challenge or dispute. Every ArchiveCenter for Enterprise client request and host response within the system is recorded giving the owner plausible accountability of all document usage and distribution.

UTILIZES EXISTING NETWORK SECURITY AND USER ACCOUNTS

ArchiveCenter for Enterprise can be set to run under security local to the host computer, or network domain authentication can be used allowing users to login with the same user name and password that they use to login to the network. In addition to the user privileges assigned internally within ArchiveCenter for Enterprise, network file access permissions can also be applied to the mapped user accounts.

VAULTING, REVISION CONTROL, RECORD LOCKING BY GROUP

ArchiveCenter for Enterprise allows you to vault your documents in large company wide repositories, with the ability to lock-out records to users who have not been assigned to the project. Additional document check-out and check-in allows files to be edited without the usual contention problem of multiple people unknowingly editing the same document. Revision control makes it easy to recall all current documents, and the current revision can be displayed above, and in a different color then the earlier revisions. Certain users can be restricted to only access current document revisions or versions.



AUTOMATED DOCUMENT INDEXING USING TEXT ZONES AND OCR

The ScanDEX document indexing module loads documents into databases using the fastest methods and using as few steps as possible. Text zones can be defined within title blocks to capture attribute data using OCR or manually using "heads-up" data entry. Batch document processing such as alignment, rotation, de-speckling, mirroring and inversion can be performed automatically during the indexing process using macro definitions.

EXPORT TO CD AND DVD

ArchiveCenter for Enterprise allows you to be accountable by permitting publishing of self-contained CD and DVD archives of your projects with embedded search, view, and print tool. This allows the document data to behave on the disc the way it did when it was on line. This is a great idea for long time storage of projects and documents that are no longer required to be on-line, or for the distribution and delivery of document data to remote parties, instead of overnight shipment of heavy paper prints.

** All brand names are property of their respective owners. "IntraNETIX" and "ScanDEX" are registered trademarks of IDEAL.com. "ArchiveCenter for Enterprise" is a trademark of IDEAL.com. Copyright © 2004 by IDEAL.com.*

11810 Parklawn Drive
Rockville, MD 20852

Phone: 800-76-IDEAL (764-3325)
Fax: 301-230-0813

E-mail: sales@ideal.com
Internet: www.ideal.com

IDEAL.com